

FOR SALE:

Borhart Farm

1200 E CR 2850 N, Mansfield, IL 61854

Blue Ridge Township
Piatt County



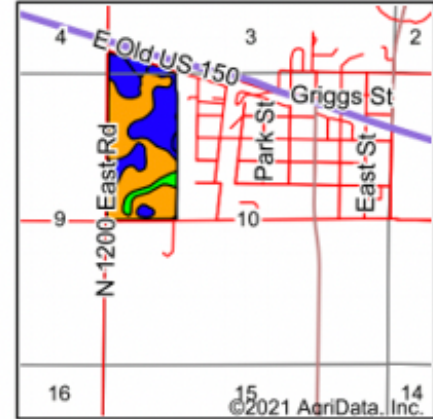
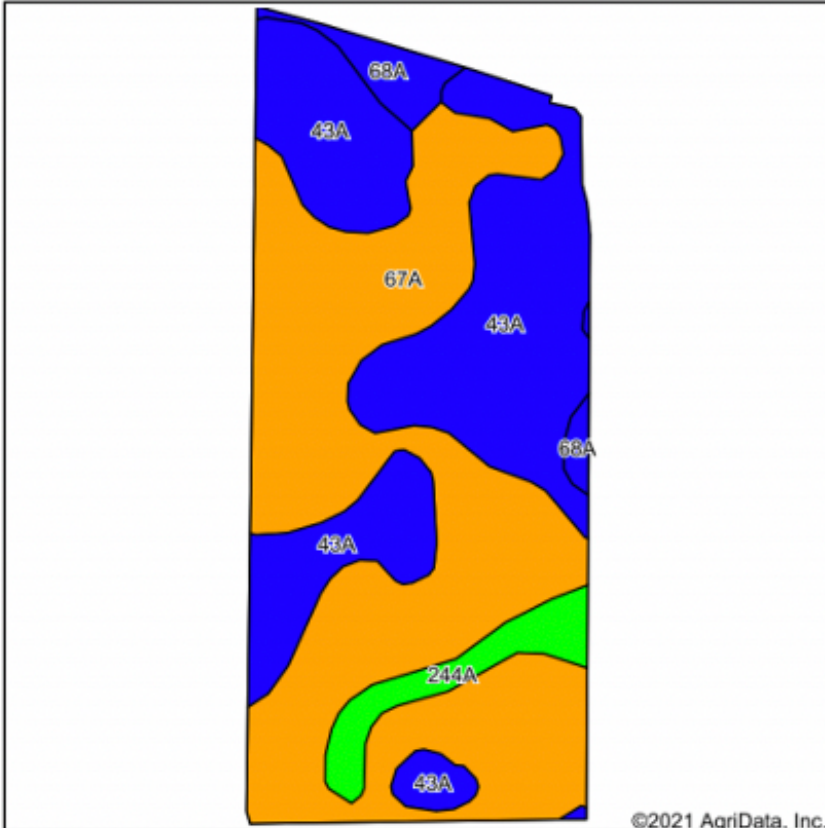
\$12,750/acre

88.92 +/- total acres
Open lease for 2021
Average PI = 136.9
Yield 5-Year Average:
Corn - 236
Beans - 67



*Information in this flyer is believed to be accurate to the best of our knowledge.
We are not responsible for errors or omissions.

Soils Map



State: **Illinois**
 County: **Piatt**
 Location: **10-20N-6E**
 Township: **Blue Ridge**
 Acres: **82.92**
 Date: **2/18/2021**



Maps Provided By:

 CUSTOMIZED ONLINE MAPPING
 © AgriData, Inc. 2021 www.AgriDataInc.com



Soils data provided by USDA and NRCS.

Code	Soil Description	Acres	Percent of field	Il. State Productivity Index Legend	Corn Bu/A	Soybeans Bu/A	Crop productivity index for optimum management
67A	Harpster silty clay loam, 0 to 2 percent slopes	44.01	53.1%		182	57	133
43A	Ipava silt loam, 0 to 2 percent slopes	32.09	38.7%		191	62	142
244A	Hartsburg silty clay loam, 0 to 2 percent slopes	4.01	4.8%		182	59	134
68A	Sable silty clay loam, 0 to 2 percent slopes	2.81	3.4%		192	63	143
Weighted Average					185.8	59.2	136.9

Table: Optimum Crop Productivity Ratings for Illinois Soil by K.R. Olson and J.M. Lang, Office of Research, ACES, University of Illinois at Champaign-Urbana. Version: 1/2/2012 Amended Table S2 B811

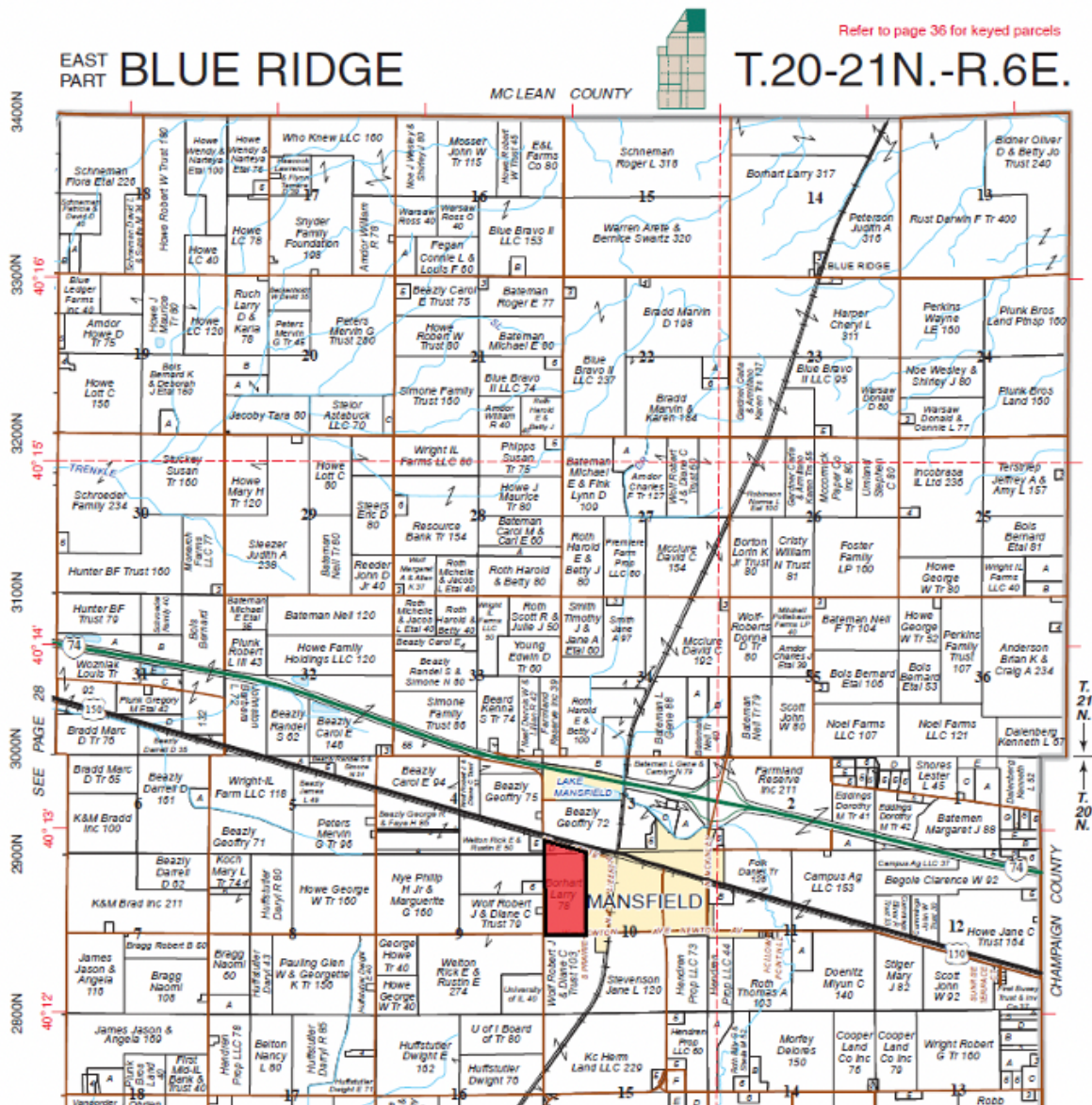
Crop yields and productivity indices for optimum management (B811) are maintained at the following NRES web site: <http://soilproductivity.nres.illinois.edu/>

** Indexes adjusted for slope and erosion according to Bulletin 811 Table S3

*c: Using Capabilities Class Dominant Condition Aggregation Method

Soils data provided by USDA and NRCS. Soils data provided by University of Illinois at Champaign-Urbana.

System Pattern Tiled in 2009



**Littlefield
Ag Group**

Steve: 217-202-7950

Matt: 217-251-7067

Trey: 217-841-2542

Clayton: 217-474-1345