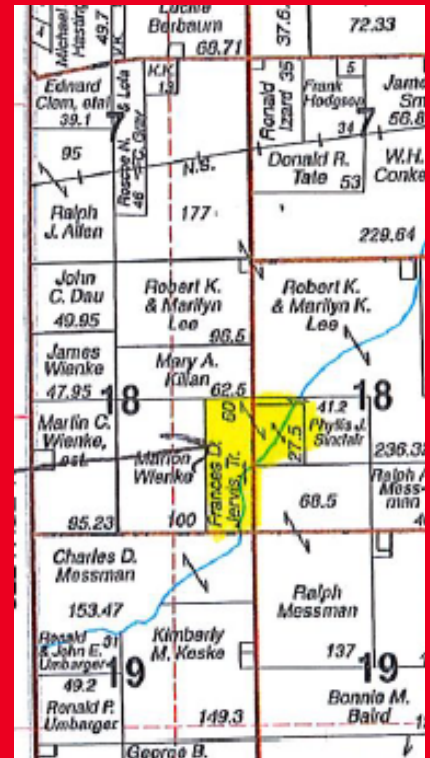


2500 E. CR 900 N., Homer, IL. 61849

**Section 18, 18N, 11E
South Homer Township
Champaign County**

\$932,800



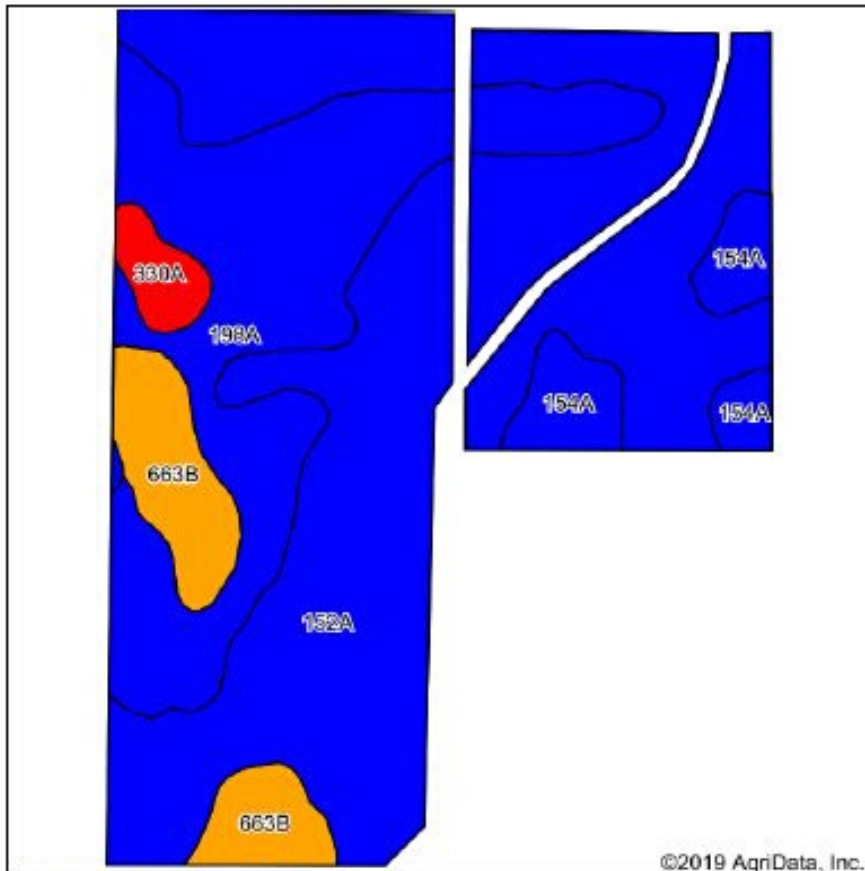
Beans 68.6
Corn 232.2

Recent tile installation!

*Information in this flyer is believed to be accurate to the best of our knowledge.
We are not responsible for errors or omissions.



Soils Map



Soils data provided by USDA and NRCS.



State: Illinois
County: Champaign
Location: 18-18N-11E
Township: South Homer
Acres: 86.12
Date: 3/1/2020



Map Provided By:



Area Symbol: IL019, Soil Area Version: 14							
Code	Soil Description	Acres	Percent of field	Il. State Productivity Index Legend	Com Bu/A	Soybeans Bu/A	Crop productivity index for optimum management
152A	Drummer silty clay loam, 0 to 2 percent slopes	49.69	57.7%		195	63	144
196A	Elburn silt loam, 0 to 2 percent slopes	23.60	27.4%		197	61	143
**663B	Clare silt loam, 2 to 5 percent slopes	6.53	7.6%		**180	**56	**133
154A	Flanagan silt loam, 0 to 2 percent slopes	4.67	5.4%		194	63	144
330A	Peotone silty clay loam, 0 to 2 percent slopes	1.63	1.9%		164	55	123
Weighted Average					193.8	61.8	142.5

Table: Optimum Crop Productivity Ratings for Illinois Soil by K.R. Olson and J.M. Lang, Office of Research, ACES, University of Illinois at Champaign-Urbana. Version: 1/2/2012 Amended Table S2 B811

Crop yields and productivity indices for optimum management (B811) are maintained at the following NRES web site: <http://soilproductivity.nres.illinois.edu/>

** Indexes adjusted for slope and erosion according to Bulletin 811 Table S3

*c: Using Capabilities Class Dominant Condition Aggregation Method

Soils data provided by USDA and NRCS. Soils data provided by University of Illinois at Champaign-Urbana.



Littlefield Ag Group

Steve: 217-202-7950

Matt: 217-251-7067

Trey: 217-841-2542

Clayton: 217-474-1345