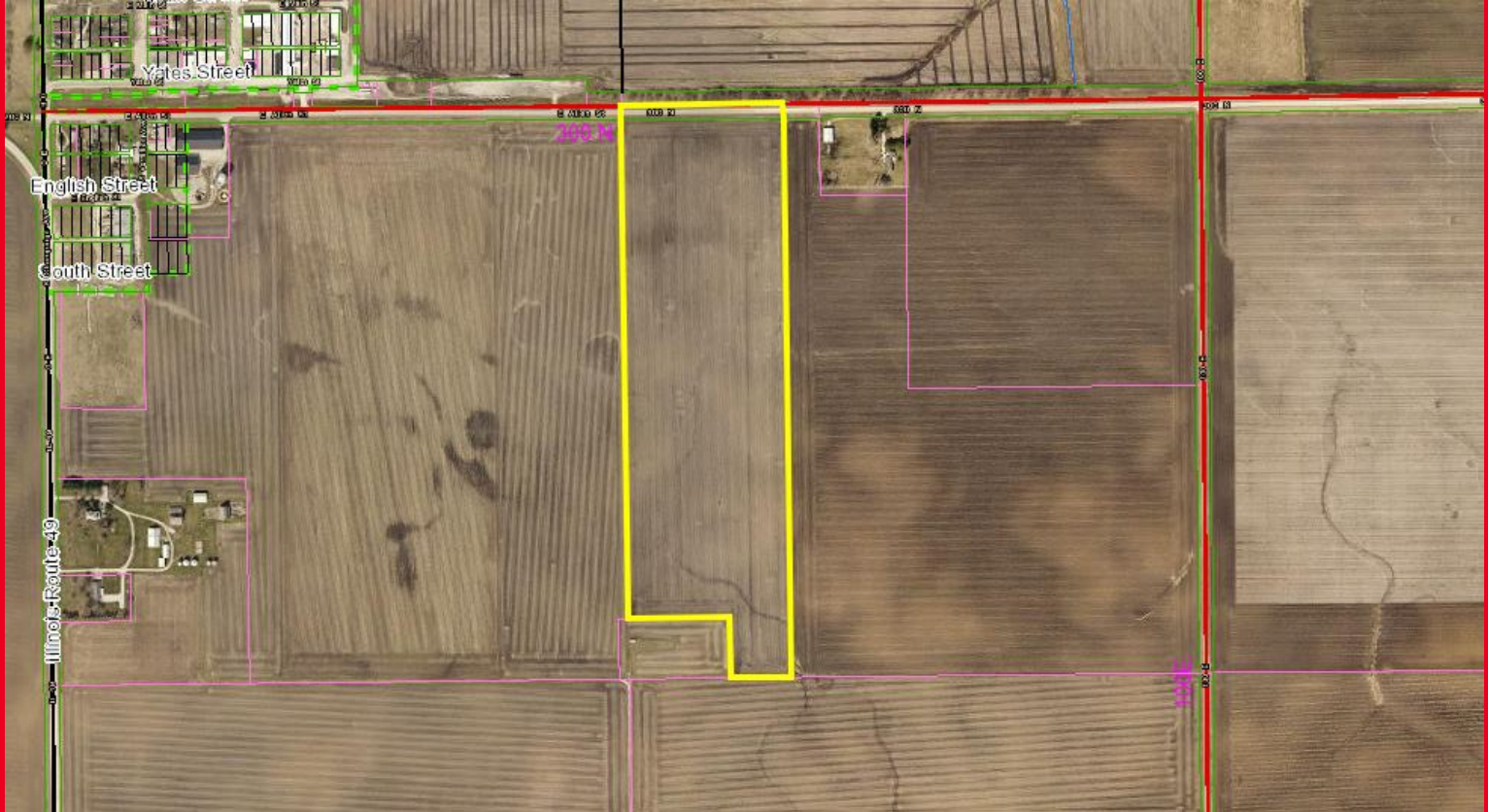


FOR SALE: Mulcahey Farm

75 E CR 300 N, Allerton, IL 61810

Ayers Township
Vermilion County



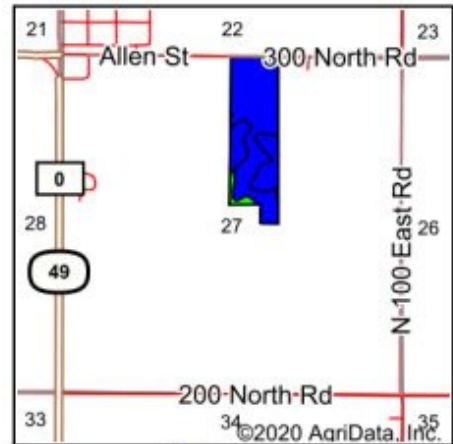
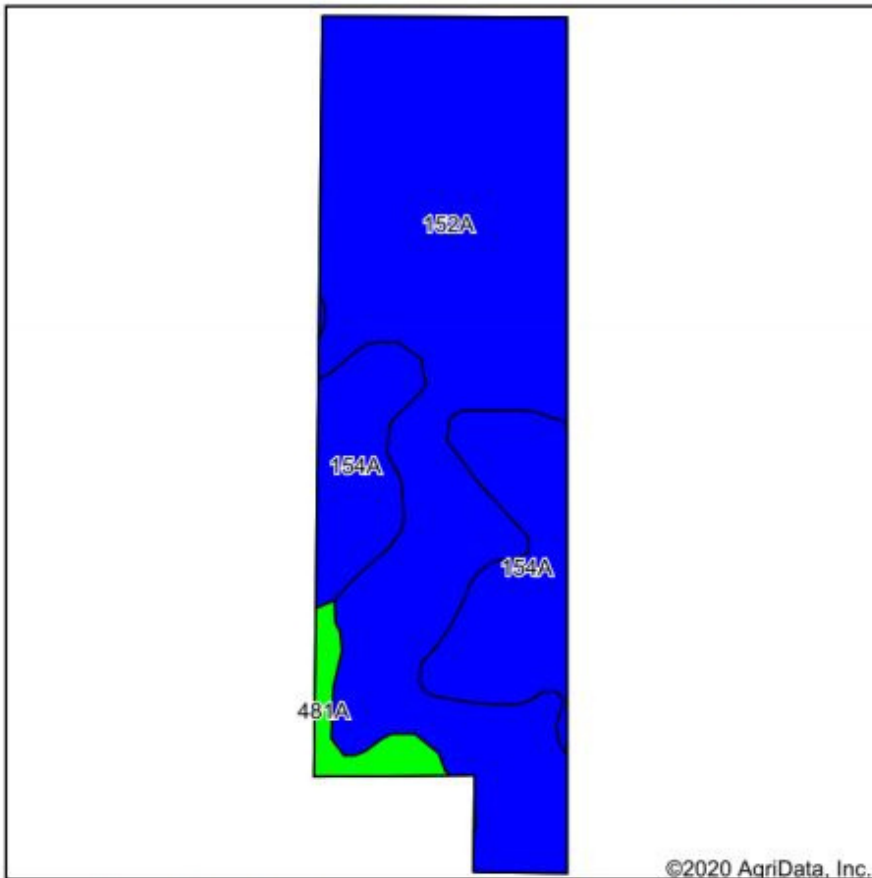
\$501,823

**42.17 +/- total acres of
Class A farm ground
with an average PI of
143.6.**



*Information in this flyer is believed to be accurate to the best of our knowledge.
We are not responsible for errors or omissions.

Soils Map



State: **Illinois**
 County: **Vermilion**
 Location: **27-17N-14W**
 Township: **Sidell**
 Acres: **41.34**
 Date: **11/19/2020**



Maps Provided By:



Area Symbol: IL 183, Soil Area Version: 16

Code	Soil Description	Acres	Percent of field	Il. State Productivity Index Legend	Corn Bu/A	Soybeans Bu/A	Crop productivity index for optimum management
152A	Drummer silty clay loam, 0 to 2 percent slopes	29.81	72.1%		195	63	144
154A	Flanagan silt loam, 0 to 2 percent slopes	10.07	24.4%		194	63	144
481A	Raub silt loam, non-densic substratum, 0 to 2 percent slopes	1.46	3.5%		183	58	134
Weighted Average					194.3	62.8	143.6

Table: Optimum Crop Productivity Ratings for Illinois Soil by K.R. Olson and J.M. Lang, Office of Research, ACES, University of Illinois at Champaign-Urbana. Version: 1/2/2012 Amended Table S2 B811

Crop yields and productivity indices for optimum management (B811) are maintained at the following NRES web site: <http://soilproductivity.nres.illinois.edu/>

** Indexes adjusted for slope and erosion according to Bulletin 811 Table S3

*c: Using Capabilities Class Dominant Condition Aggregation Method

Soils data provided by USDA and NRCS. Soils data provided by University of Illinois at Champaign-Urbana.



Littlefield Ag Group

Steve: 217-202-7950

Matt: 217-251-7067

Trey: 217-841-2542

Clayton: 217-474-1345