

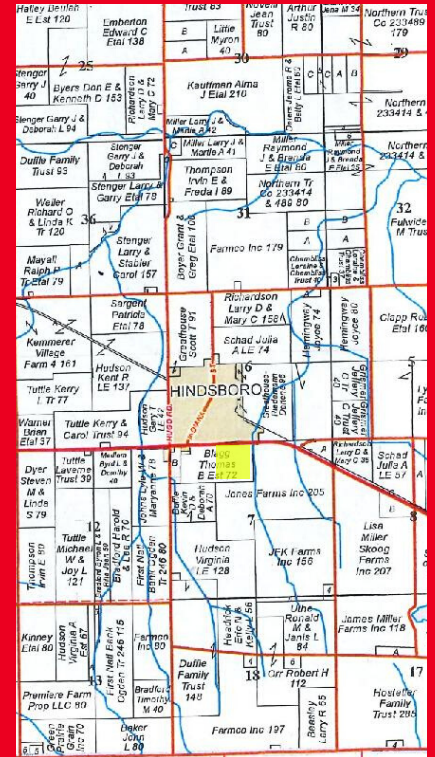
FOR SALE: Munson Farm

1800 E. 200 N Rd., Hindsboro, IL. 61930

Bowdre Township
Douglas County



**40 +/- total acres
of Class A farm
ground with an
average PI of
138.4.**



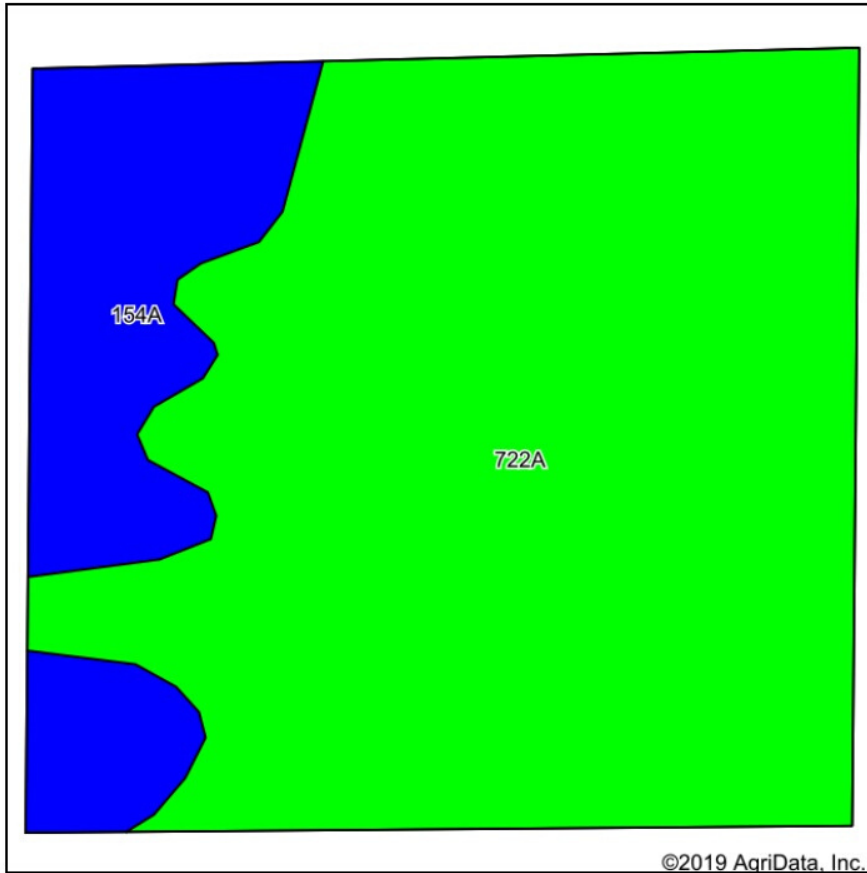
**Current lease runs through
2020 crop year.**

50/50 crop and expense share.

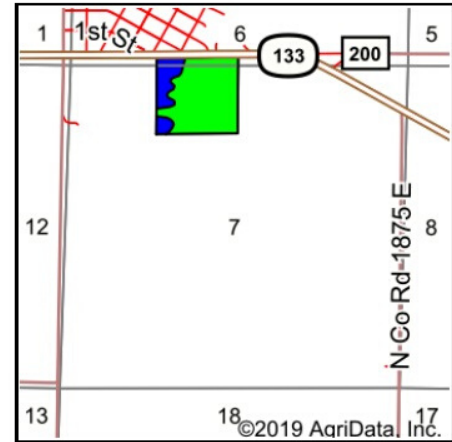
*Information in this flyer is believed to be accurate to the best of our knowledge.
We are not responsible for errors or omissions.



Soils Map



Soils data provided by USDA and NRCS.



State: **Illinois**
 County: **Douglas**
 Location: **7-14N-10E**
 Township: **Bowdre**
 Acres: **38.07**
 Date: **4/3/2020**



Maps Provided By:



© AgriData, Inc. 2019

www.AgriDataInc.com



Area Symbol: IL041, Soil Area Version: 17							
Code	Soil Description	Acres	Percent of field	Il. State Productivity Index Legend	Corn Bu/A	Soybeans Bu/A	Crop productivity index for optimum management
722A	Drummer-Milford silty clay loams, 0 to 2 percent slopes	30.62	80.4%		184	60	137
154A	Flanagan silt loam, 0 to 2 percent slopes	7.45	19.6%		194	63	144
Weighted Average					186	60.6	138.4

Table: Optimum Crop Productivity Ratings for Illinois Soil by K.R. Olson and J.M. Lang, Office of Research, ACES, University of Illinois at Champaign-Urbana. Version: 1/2/2012 Amended Table S2 B811

Crop yields and productivity indices for optimum management (B811) are maintained at the following NRES web site: <http://soilproductivity.nres.illinois.edu/>

** Indexes adjusted for slope and erosion according to Bulletin 811 Table S3

*c: Using Capabilities Class Dominant Condition Aggregation Method

Soils data provided by USDA and NRCS. Soils data provided by University of Illinois at Champaign-Urbana.



Littlefield Ag Group

Steve: 217-202-7950

Matt: 217-251-7067

Trey: 217-841-2542

Clayton: 217-474-1345