

FOR SALE: Schwartz Farm

350 N 1900 E. Longview, IL 61852

**Raymond Township
Champaign County**



\$12,900/acre

40 +/- total Acres

2021 Lease: 40-60 Crop Share

Average PI = 140.2

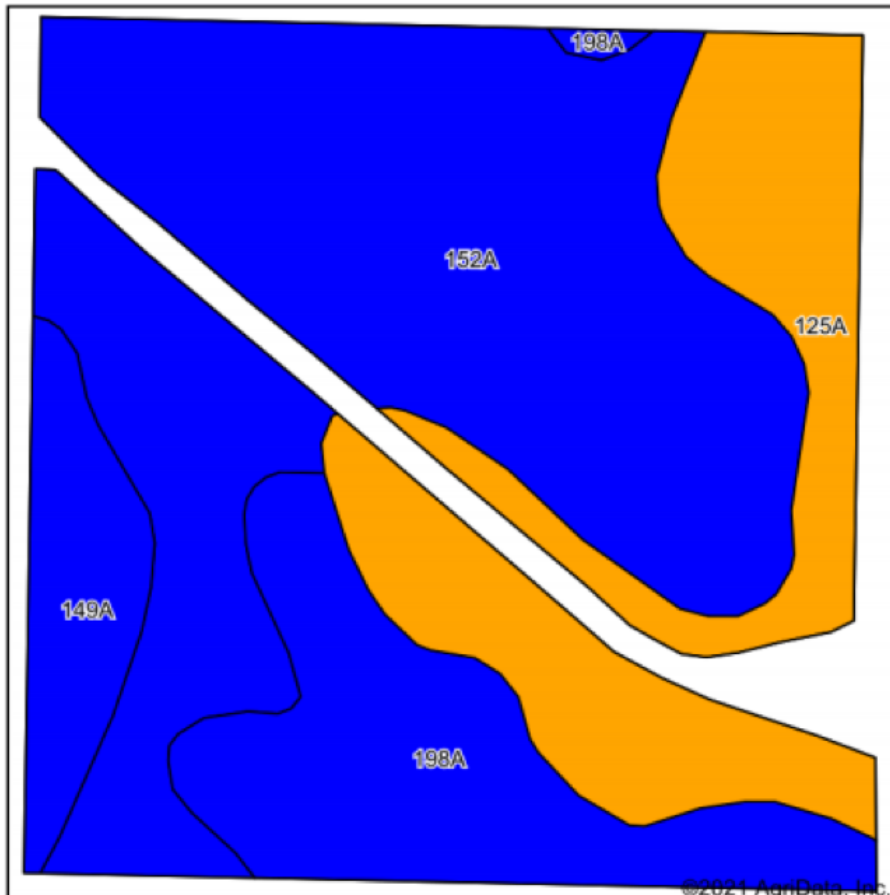


9.1 Acres of CRP - \$230/Acre - Exp. 9/30/23

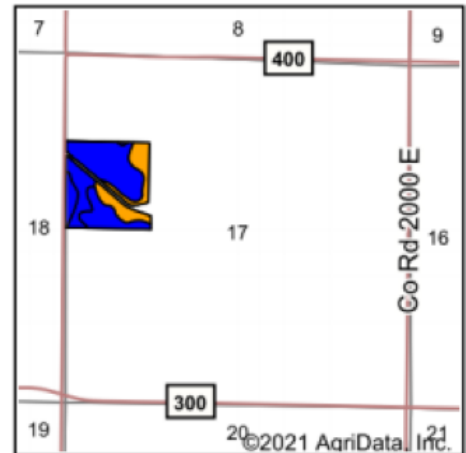
*Information in this flyer is believed to be accurate to the best of our knowledge.
We are not responsible for errors or omissions.

Soils Map

Soils Map



Soils data provided by USDA and NRCS.



State: **Illinois**
 County: **Champaign**
 Location: **17-17N-10E**
 Township: **Raymond**
 Acres: **36.96**
 Date: **3/4/2021**



Maps Provided By:



© AgriData, Inc. 2021 www.AgriDataInc.com



Area Symbol: IL019, Soil Area Version: 15

Code	Soil Description	Acres	Percent of field	Il. State Productivity Index Legend	Corn Bu/A	Soybeans Bu/A	Crop productivity index for optimum management
152A	Drummer silty clay loam, 0 to 2 percent slopes	19.54	52.9%		195	63	144
125A	Selma loam, 0 to 2 percent slopes	8.57	23.2%		176	57	129
198A	Elburn silt loam, 0 to 2 percent slopes	6.41	17.3%		197	61	143
149A	Brenton silt loam, 0 to 2 percent slopes	2.44	6.6%		195	60	141
Weighted Average					190.9	61.1	140.2

Table: Optimum Crop Productivity Ratings for Illinois Soil by K.R. Olson and J.M. Lang, Office of Research, ACES, University of Illinois at Champaign-Urbana. Version: 1/2/2012 Amended Table S2 B811

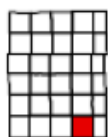
Crop yields and productivity indices for optimum management (B811) are maintained at the following NRES web site: <http://soilproductivity.nres.illinois.edu/>

** Indexes adjusted for slope and erosion according to Bulletin 811 Table S3

*c: Using Capabilities Class Dominant Condition Aggregation Method

Soils data provided by USDA and NRCS. Soils data provided by University of Illinois at Champaign-Urbana.

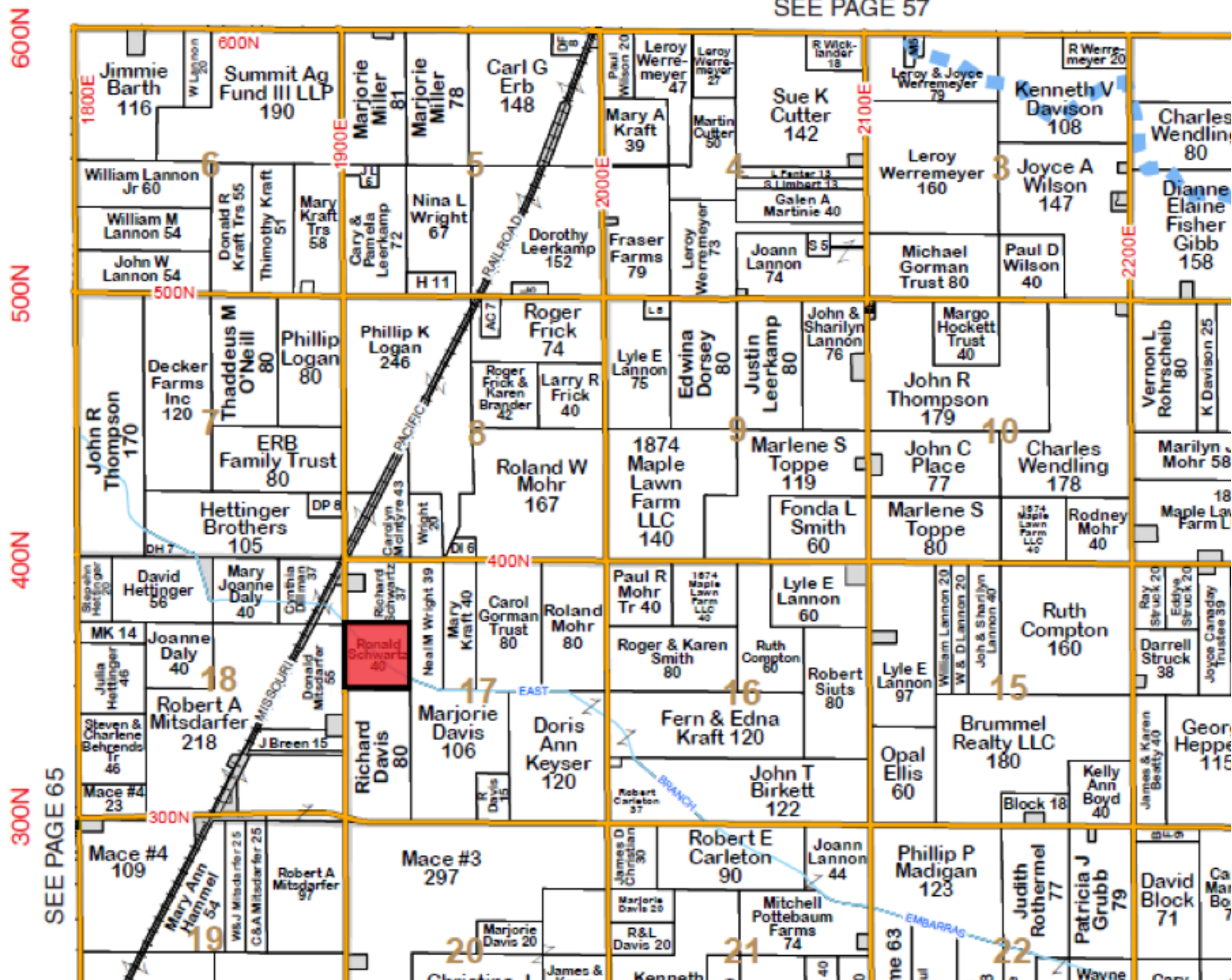
36.96 Estimated Tillable Acres - 92.4% Tillable 2019 RE Tax Paid in 2020 - \$1,610.64 or \$40.27/ac



Raymond Township 17N - Range 10E

Copyright © 2019 Mapping Solutions

SEE PAGE 57



Littlefield Ag Group

Steve: 217-202-7950

Matt: 217-251-7067

Trey: 217-841-2542

Clayton: 217-474-1345