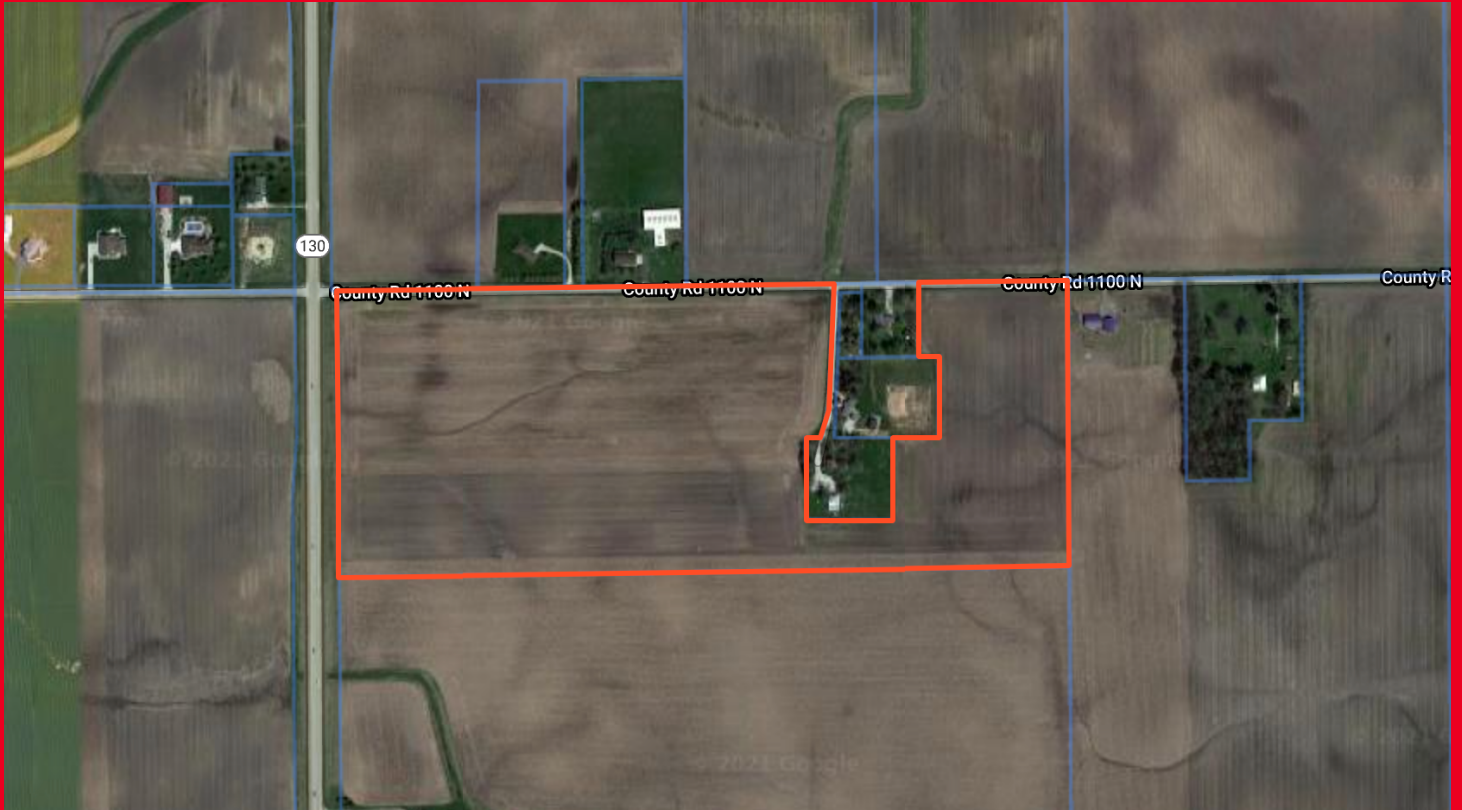


FOR SALE:

Silver Farm

1098 US Rt. 130, Philo, IL 61864

Philo Township
Champaign County



\$12,200/acre

**48.70 +/- total acres of
excellent Class A farm
ground with an open
lease for 2021 and
reimbursements for
2021 Inputs.
Average PI = 142.6.**



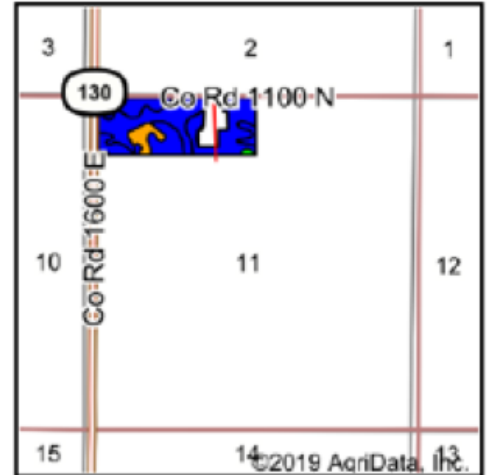
*Information in this flyer is believed to be accurate to the best of our knowledge.
We are not responsible for errors or omissions.

Soils Map



©2019 AgriData, Inc.

Soils data provided by USDA and NRCS.



State: **Illinois**
 County: **Champaign**
 Location: **11-18N-9E**
 Township: **Philo**
 Acres: **47.08**



Maps Provided By:



Area Symbol: IL019, Soil Area Version: 13							
Code	Soil Description	Acres	Percent of field	Il. State Productivity Index Legend	Corn Bu/A	Soybeans Bu/A	Crop productivity index for optimum management
154A	Flanagan silt loam, 0 to 2 percent slopes	26.87	57.1%		194	63	144
152A	Drummer silty clay loam, 0 to 2 percent slopes	15.90	33.8%		195	63	144
**56B	Dana silt loam, 2 to 5 percent slopes	3.69	7.8%		**178	**55	**130
**171B	Catlin silt loam, 2 to 5 percent slopes	0.62	1.3%		**185	**58	**137
Weighted Average					193	62.3	142.8

Table: Optimum Crop Productivity Ratings for Illinois Soil by K.R. Olson and J.M. Lang, Office of Research, ACES, University of Illinois at Champaign-Urbana. Version: 1/2/2012 Amended Table S2 B811

Crop yields and productivity indices for optimum management (B811) are maintained at the following NRES web site: <http://soilproductivity.nres.illinois.edu/>

** Indexes adjusted for slope and erosion according to Bulletin 811 Table S3

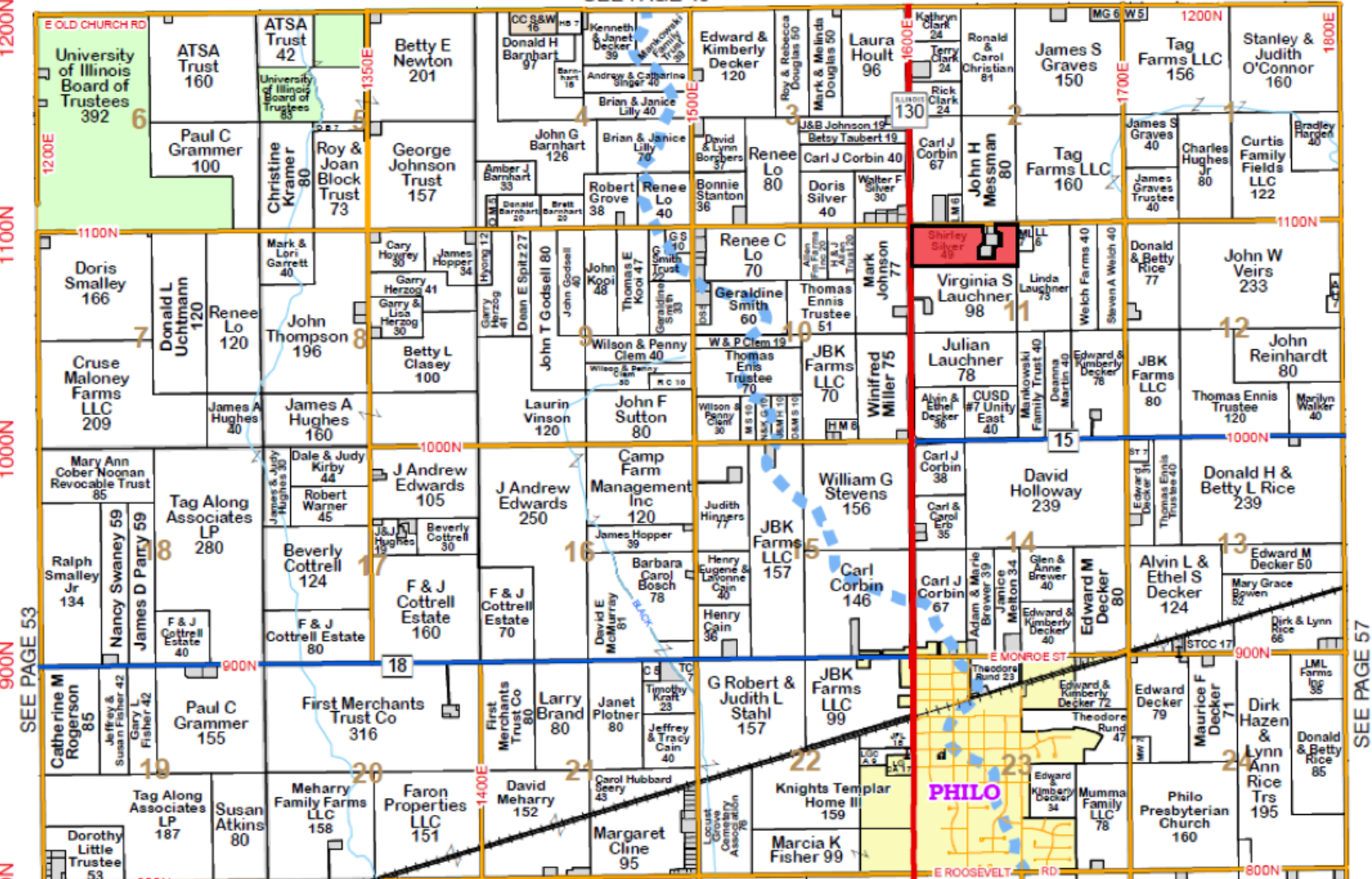
*c: Using Capabilities Class Dominant Condition Aggregation Method

Soils data provided by USDA and NRCS. Soils data provided by University of Illinois at Champaign-Urbana.

A 5x5 grid with a red square in the 3rd row, 3rd column.

Township 18N - Range 9E

SEE PAGE 45



Steve: 217-202-7950
Matt: 217-251-7067
Trey: 217-841-2542
Clayton: 217-474-1345