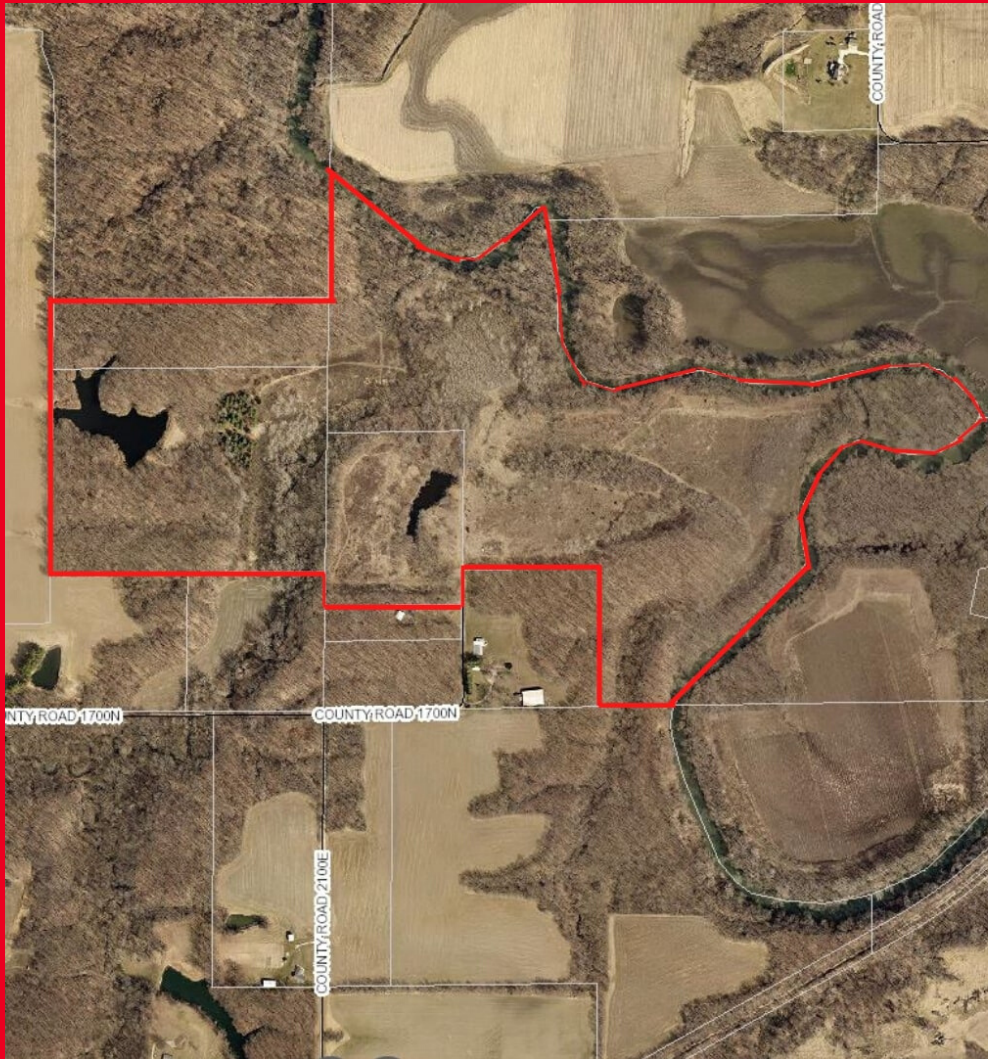


# FOR SALE: Stewart Ground

21101 E CR 1700 N, Charleston, IL 61920

Morgan Township  
Coles County

**127 +/- acres  
excellent  
hunting  
recreational  
land.**



**The property currently holds a  
CRP contract that generates  
roughly \$3,900/year income.**

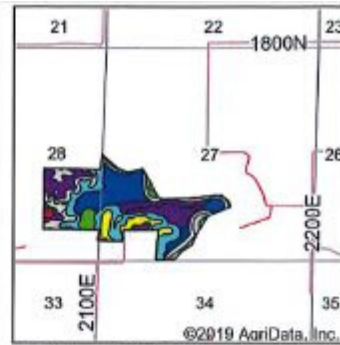
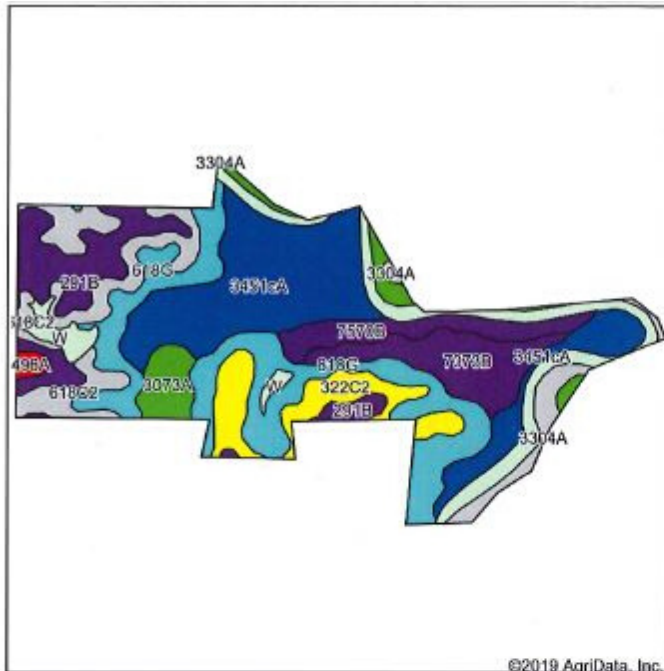
**\$533,400**



\*Information in this flyer is believed to be accurate to the best of our knowledge.  
We are not responsible for errors or omissions.



# Soils Map



State: **Illinois**  
 County: **Coles**  
 Location: **27-14N-10E**  
 Township: **Morgan**  
 Acres: **127 +/-**  
 Date: **2/19/2020**



Maps Provided By  
**surety**  
 CUSTOMIZED ONLINE MAPPING  
 © AgriData, Inc. 2019 [www.AgriDataInc.com](http://www.AgriDataInc.com)



Soils data provided by USDA and NRCS.

Area Symbol: IL029, Soil Area Version: 19							
Code	Soil Description	Acres	Percent of field	Il. State Productivity Index Legend	Corn Bu/A	Soybeans Bu/A	Crop productivity index for optimum management
3451cA	Lawson silt loam, cool mesic, 0 to 2 percent slopes, frequently flooded	31.92	23.9%		190	61	140
**618G	Senachwine silt loam, 35 to 60 percent slopes	25.87	19.3%		**70	**23	**51
**291B	Xenia silt loam, Bloomington Ridged Plain, 2 to 5 percent slopes	13.24	9.9%		**160	**50	**117
W	Water	12.79	9.6%				
**618C2	Senachwine silt loam, 5 to 10 percent slopes, eroded	12.24	9.1%		**136	**44	**100
7373B	Camden silt loam, sandy substratum, 2 to 5 percent slopes, rarely flooded	10.32	7.7%		150	48	109
**322C2	Russell silt loam, Bloomington Ridged Plain, 5 to 10 percent slopes, eroded	9.35	7.0%		**149	**47	**108
7570B	Martinsville silt loam, 2 to 5 percent slopes, rarely flooded	6.84	5.1%		155	49	114
3304A	Landes fine sandy loam, 0 to 2 percent slopes, frequently flooded	4.06	3.0%		135	45	100
3073A	Ross silt loam, 0 to 2 percent slopes, frequently flooded	3.84	2.9%		181	59	134
3107A	Sawmill silty clay loam, 0 to 2 percent slopes, frequently flooded	2.54	1.9%		189	60	139
496A	Fincastle silt loam, udic moisture class, 0 to 2 percent slopes	0.81	0.6%		166	52	121
Weighted Average					130.9	42	96

Table: Optimum Crop Productivity Ratings for Illinois Soil by K.R. Olson and J.M. Lang, Office of Research, ACES, University of Illinois at Champaign-Urbana. Version: 1/2/2012 Amended Table S2 B811

Crop yields and productivity indices for optimum management (B811) are maintained at the following NRES web site:

<http://soilproductivity.nres.illinois.edu/>

\*\* Indexes adjusted for slope and erosion according to Bulletin 811 Table S3

\*c: Using Capabilities Class Dominant Condition Aggregation Method

Soils data provided by USDA and NRCS. Soils data provided by University of Illinois at Champaign-Urbana.



## Littlefield Ag Group

Steve: 217-202-7950

Matt: 217-251-7067

Trey: 217-841-2542

Clayton: 217-474-1345