

# FOR SALE:

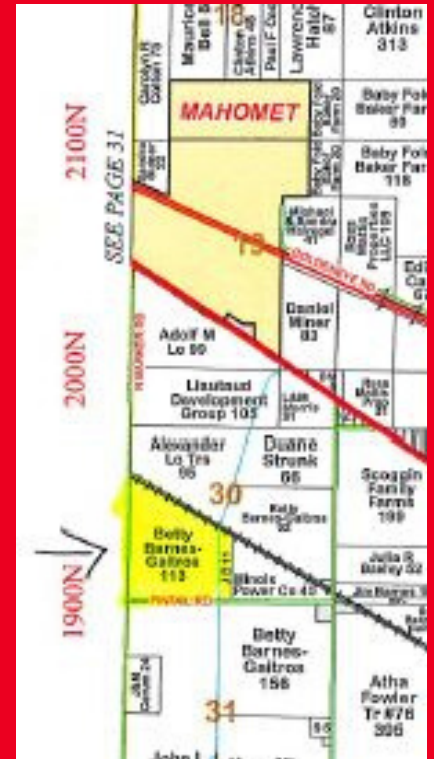
650 E. CR 1900 N, Champaign, IL 61822

# Treat Farm

Hensley Township  
Champaign County

**113 +/- total  
acres of Class A  
farm ground with  
an average PI of  
143.6.**

**\$1,265,600**

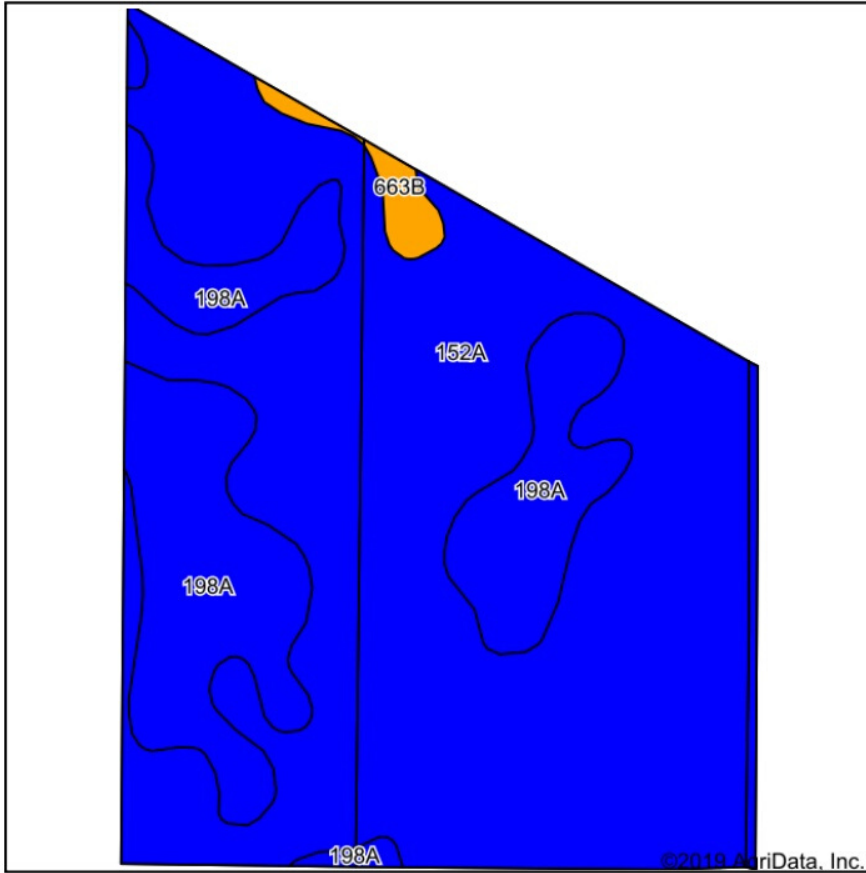


Pin	Acres
12-14-30-300-002	40.00
12-14-30-300-003	22.47
12-14-30-300-004	50.76

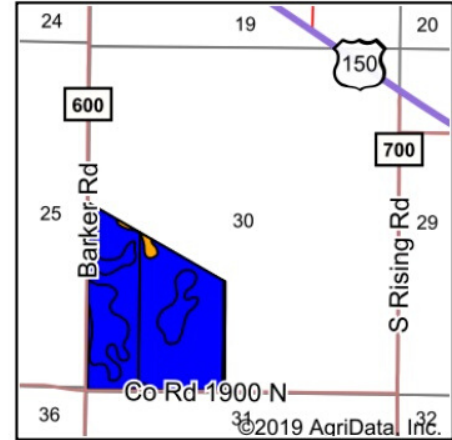
\*Information in this flyer is believed to be accurate to the best of our knowledge.  
We are not responsible for errors or omissions.



# Soils Map



Soils data provided by USDA and NRCS.



State: **Illinois**  
 County: **Champaign**  
 Location: **30-20N-8E**  
 Township: **Hensley**  
 Acres: **109.11**  
 Date: **4/15/2020**



Maps Provided By:



© AgriData, Inc. 2019

www.AgriDataInc.com



Area Symbol: IL019, Soil Area Version: 14							
Code	Soil Description	Acres	Percent of field	Il. State Productivity Index Legend	Corn Bu/A	Soybeans Bu/A	Crop productivity index for optimum management
152A	Drummer silty clay loam, 0 to 2 percent slopes	80.95	74.2%		195	63	144
198A	Elburn silt loam, 0 to 2 percent slopes	26.60	24.4%		197	61	143
**663B	Clare silt loam, 2 to 5 percent slopes	1.56	1.4%		**180	**56	**133
Weighted Average					195.3	62.4	143.6

**Table: Optimum Crop Productivity Ratings for Illinois Soil by K.R. Olson and J.M. Lang, Office of Research, ACES, University of Illinois at Champaign-Urbana.** Version: 1/2/2012 Amended Table S2 B811

Crop yields and productivity indices for optimum management (B811) are maintained at the following NRES web site: <http://soilproductivity.nres.illinois.edu/>

\*\* Indexes adjusted for slope and erosion according to Bulletin 811 Table S3

\*c: Using Capabilities Class Dominant Condition Aggregation Method

Soils data provided by USDA and NRCS. Soils data provided by University of Illinois at Champaign-Urbana.



## Littlefield Ag Group

Steve: 217-202-7950

Matt: 217-251-7067

Trey: 217-841-2542

Clayton: 217-474-1345