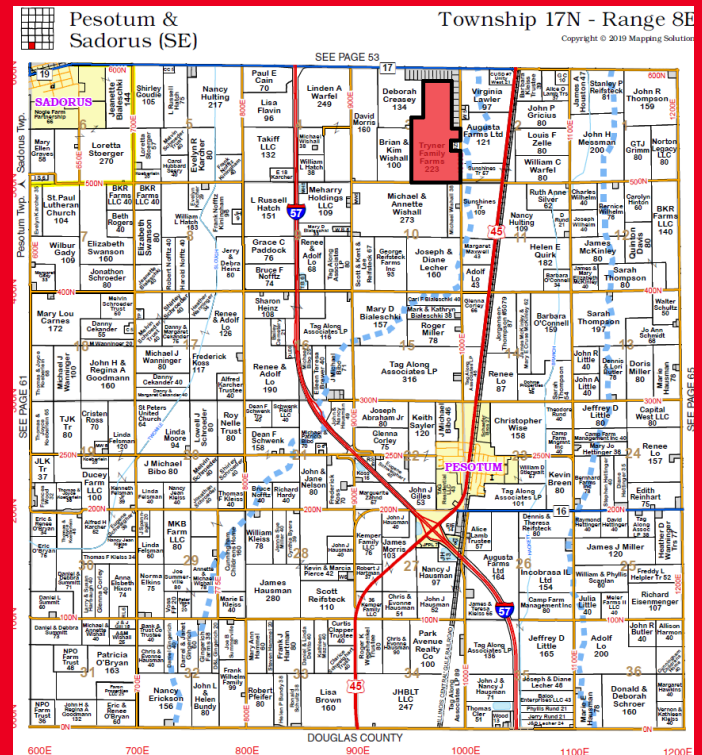
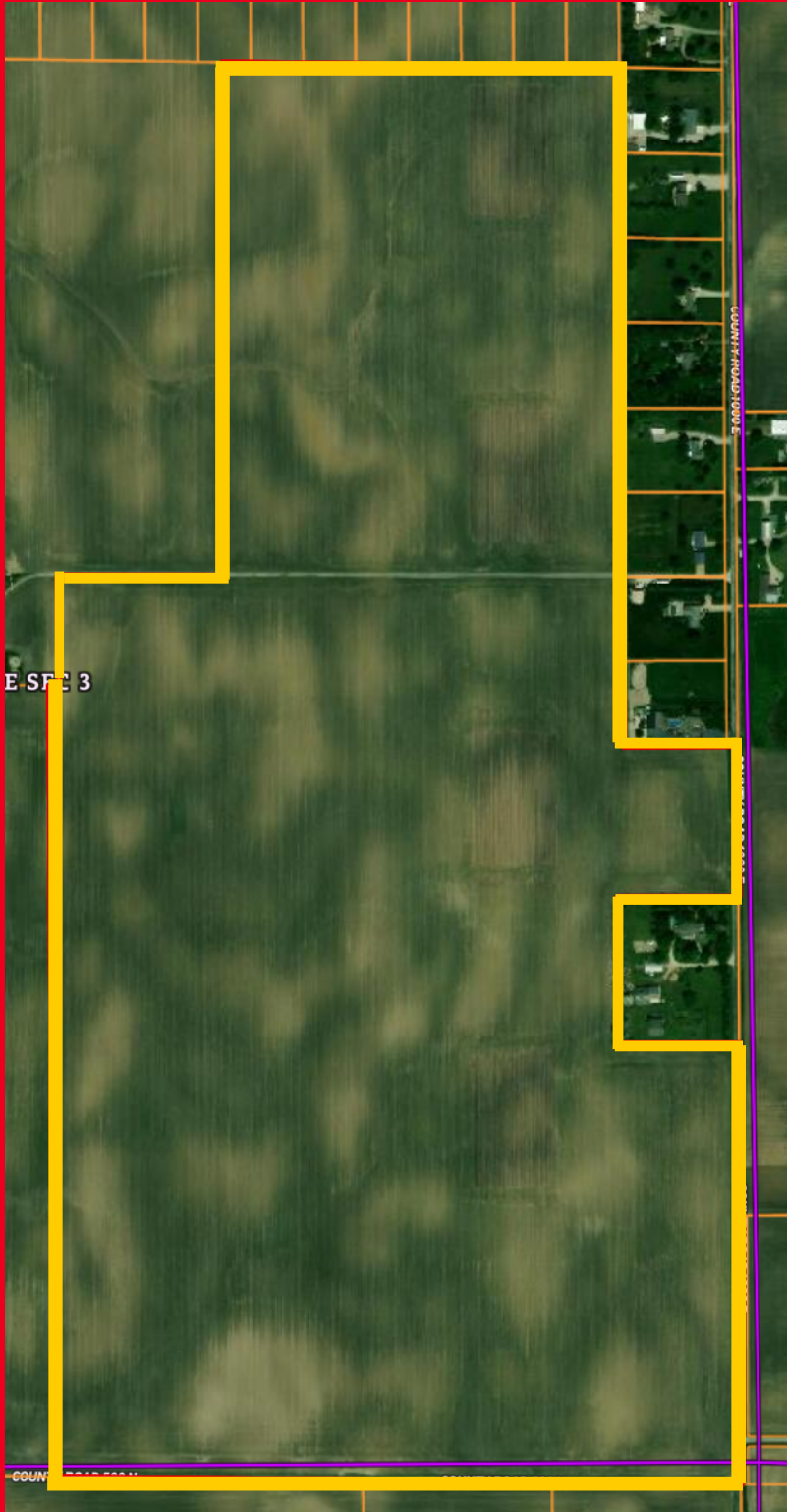


FOR SALE: Tryner Farm

550 N. 1000 E., Tolono, IL 61880

Pesotum Township
Champaign County

223 +/- total
acres of Class A
farm ground with
an average PI of
142.8.



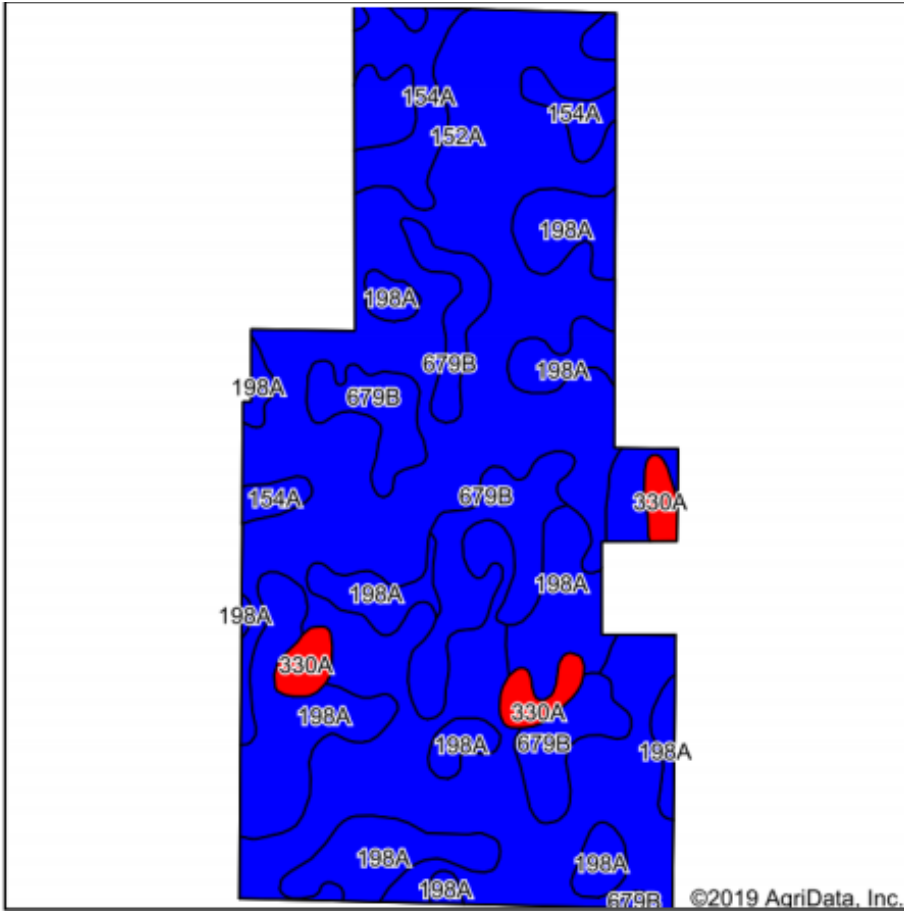
\$2,655,366

\$11,900/acre

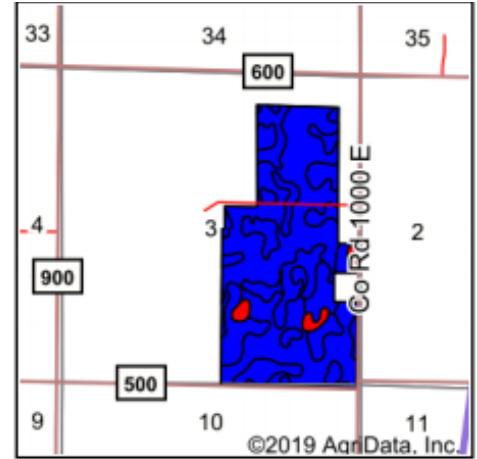
*Information in this flyer is believed to be accurate to the best of our knowledge.
We are not responsible for errors or omissions.



Soils Map



Soils data provided by USDA and NRCS.



State: **Illinois**
 County: **Champaign**
 Location: **3-17N-8E**
 Township: **Pesotum**
 Acres: **221.36**
 Date: **6/10/2020**



Maps Provided By:



© AgriData, Inc. 2019

www.AgrIDataInc.com



Area Symbol: IL 019, Soil Area Version: 14							
Code	Soil Description	Acres	Percent of field	Il. State Productivity Index Legend	Corn Bu/A	Soybeans Bu/A	Crop productivity index for optimum management
152A	Drummer silty clay loam, 0 to 2 percent slopes	125.62	56.7%		195	63	144
198A	Elburn silt loam, 0 to 2 percent slopes	50.34	22.7%		197	61	143
**679B	Blackberry silt loam, 2 to 5 percent slopes	26.56	12.0%		**192	**59	**141
154A	Flanagan silt loam, 0 to 2 percent slopes	12.82	5.8%		194	63	144
330A	Peotone silty clay loam, 0 to 2 percent slopes	6.02	2.7%		164	55	123
Weighted Average					194.2	61.8	142.8

Table: Optimum Crop Productivity Ratings for Illinois Soil by K.R. Olson and J.M. Lang, Office of Research, ACES, University of Illinois at Champaign-Urbana. Version: 1/2/2012 Amended Table S2 B811

Crop yields and productivity indices for optimum management (B811) are maintained at the following NRES web site: <http://soilproductivity.nres.illinois.edu/>

** Indexes adjusted for slope and erosion according to Bulletin 811 Table S3



Littlefield Ag Group

Steve: 217-202-7950

Matt: 217-251-7067

Trey: 217-841-2542

Clayton: 217-474-1345